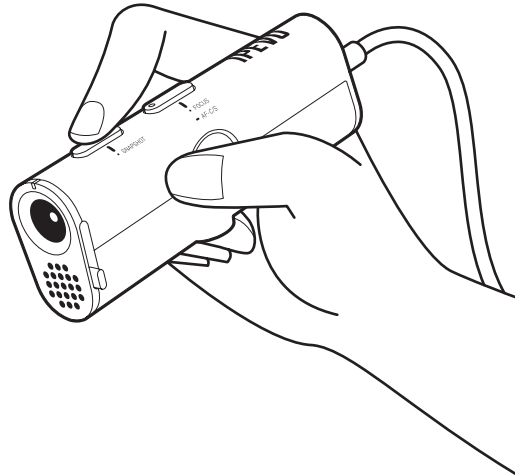


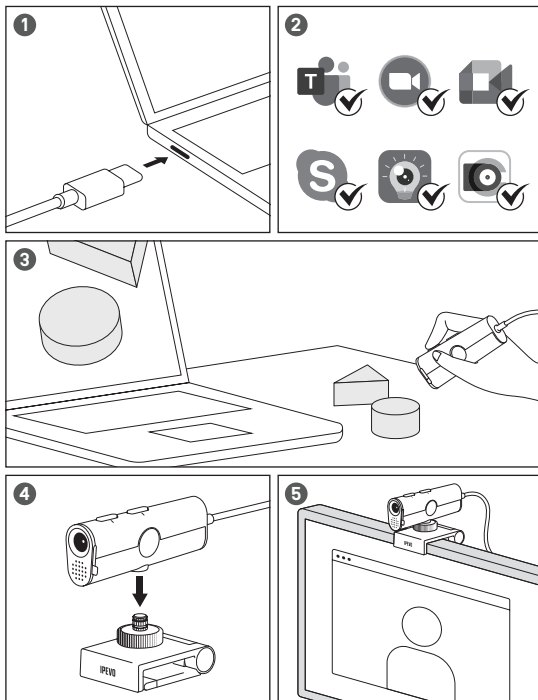
IPEVO

P2V ULTRA
OBJECT CAMERA

www.IPEVO.com



IPEVO P2V ULTRA 實物攝影機



如需完整的用戶手冊、常見問題解答和技術支持，請訪問：
www.ipevo.com.tw/pages/p2v-ultra

* 所有名稱、標誌、品牌和相關商標產品應屬於其各自的合法擁有者，此僅用於識別目的。

軟體下載



IPEVO Visualizer
使用 IPEVO 相機掃描、錄製
和擷取影像。

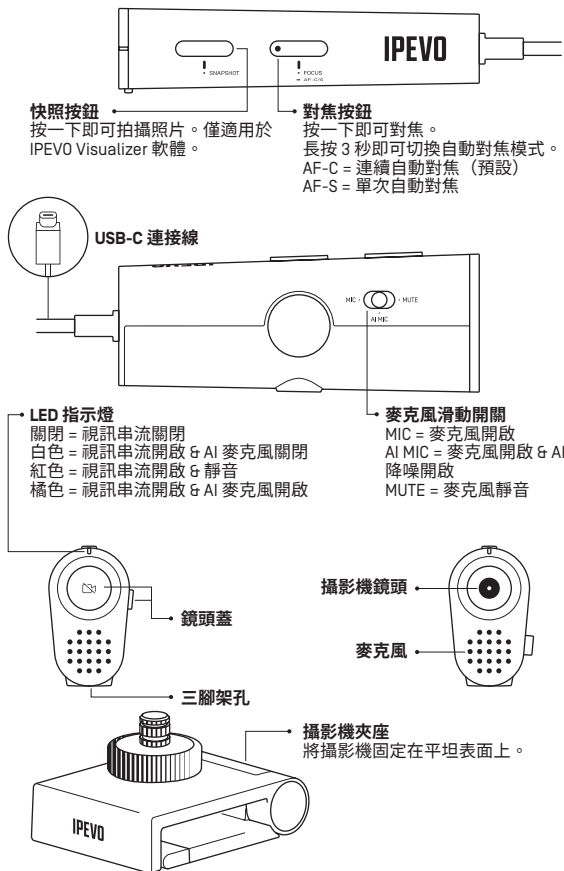
www.ipevo.com.tw/pages/visualizer



IPEVO CamControl
無需使用按鈕，即可調整
相機設定。

www.ipevo.com.tw/pages/camcontrol

了解你的 IPEVO P2V ULTRA



請勿在以下場所使用 / 存放本產品：

- 靠近熱源
- 高濕度的地方

- 多沙或多塵的地方

FCC Declaration

Federal Communications Commission [FCC] Statement

FCC This device complies with Pert 15 of the FCC Rules.

Operation is subject to the following two conditions: [1] this device may not cause harmful interference, and [2] this device must accept any interference received, including interference that may cause undesired operation.

This equipment has been tested and found to comply with the limits for a Class B digital device, pursuant to part 15 of the FCC Rules. These limits are designed to provide reasonable protection against harmful interference in a residential installation.

This equipment generates, uses and can radiate radio frequency energy and, if not installed and used in accordance with the instructions, may cause harmful interference to radio communications. However, there is no guarantee that interference will not occur in a particular installation. If this equipment does cause harmful interference to radio or television reception, which can be determined by turning the equipment off and on, the user is encouraged to try to correct the interference by one or more of the following measures:

- Reorient or relocate the receiving antenna.
- Increase the separation between the equipment and receiver.
- Connect the equipment into an outlet on a circuit different from that to which the receiver is connected.
- Consult the dealer or an experienced radio/TV technician for help.

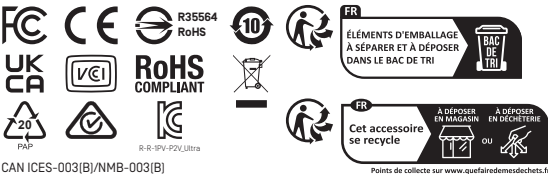
Any changes or modifications not expressly approved by the party responsible for compliance could void the authority to operate equipment. This device and its antenna must not be co-located or operating in conjunction with any other antenna or transmitter.

For product available in the USA/Canada market, only channel 1—11 can be operated. Selection of other channels is not possible.

限用物質含有情況標示聲明書

Declaration of the Presence Condition of the Restricted Substances Marking

設備名稱：USB 攝影機，型號（型式）：CDVU-161P Equipment nameType designation [Type]						
單元Unit	限用物質及其化學符號 Restricted substances and its chemical symbols					
	鉛 Lead [Pb]	汞 Mercury [Hg]	鎘 Cadmium [Cd]	六價鉻 Hexavalent chromium [Cr ⁶⁺]	多溴聯苯 Polybrominated biphenyls [PBB]	多溴二苯醚 Polybrominated diphenyl ethers [PBDE]
外殼	○	○	○	○	○	○
螺絲	○	○	○	○	○	○
主板	○	○	○	○	○	○
線材	○	○	○	○	○	○
<p>備考1. “超出0.1wt %” 及 “超出0.01 wt %” 係指限用物質之百分比含量超出百分比含量基準值。 Note 1 : “Exceeding 0.1 wt %” and “exceeding 0.01 wt %” indicate that the percentage content of the restricted substance exceeds the reference percentage value of presence condition.</p> <p>備考2. “○” 係指該項限用物質之百分比含量未超出百分比含量基準值。 Note 2 : “○” indicates that the percentage content of the restricted substance does not exceed the percentage of reference value of presence.</p> <p>備考3. “-” 係指該項限用物質為排除項目。 Note 3 : The “-” indicates that the restricted substance corresponds to the exemption.</p>						



PRODUCT / 產品 / 产品 :

IPEVO P2V ULTRA

OBJECT CAMERA

實物攝影機

实物摄像头

MODEL / 型號 / 型号 :

CDVU-16IP

INPUT / 輸入 / 输入 :

5V==0.5A

Operation temperature/ 操作溫度 / 操作温度 :

0° C to 40° C

MADE IN THAILAND/ 泰國製造 / 泰国制造