

# QuickSpecs **HPE Aruba Networking 570EX Series Hazardous Location Access Points**

---

## Overview

**Shape the Future of QuickSpecs – Your Input Matters**

### **HPE Aruba Networking 570EX Series Hazardous Location Access Points**

#### **High performance Wi-Fi 6 (802.11ax) for hazardous locations and harsh outdoor environments**

In outdoor and environmentally challenging locations such as oil rigs, mining facilities, and industrial plants, networks need to be protected from extreme temperatures, flammable gases or vapors, and dust concentrations. With Class 1 Division 2 and ATEX Zone 2 certifications, HPE Aruba Networking 570EX Series Access Points deliver reliable Wi-Fi 6 performance to the most extreme environments.

The 570EX delivers 4x4:4SS MU-MIMO capability, HPE Aruba Networking ClientMatch and integrated Bluetooth to enable HPE Aruba Networking location services. Purpose-built to survive in the harshest industrial outdoor environments, 570EX Series APs withstand exposure to extreme high and low temperatures, persistent moisture and precipitation, and are fully sealed to keep out airborne contaminants. All electrical interfaces include industrial strength surge protection.

HPE Aruba Networking Wi-Fi 6 access points provide high-performance connectivity in dense mobile and IoT environments. With maximum aggregate on air data rates of 3 Gbps (HE80/HE40), the 570EX Series APs deliver the speed and reliability needed for demanding environments.

---



**HPE Aruba Networking 570EX Series Hazardous Location Access Points**

---

## Standard Features

### Incredible Efficiency

HPE Aruba Networking 570EX Series APs are designed to optimize user experience by maximizing Wi-Fi efficiency and dramatically reducing airtime contention between clients.

### Advantages of OFDMA

This capability allows HPE Aruba Networking APs to handle multiple 802.11ax capable clients on each channel simultaneously, regardless of device or traffic type. Channel utilization is optimized by handling each transaction via smaller sub-carriers or resource units (RUs), which means that clients are sharing a channel and not competing for airtime and bandwidth.

### Multi-user MIMO (MU-MIMO)

HPE Aruba Networking 570EX Series APs support downlink MU-MIMO similar to Wi-Fi 5 (802.11ac Wave 2) APs. With the introduction OFDMA in Wi-Fi 6, the overhead for this capability is reduced and MU-MIMO effectiveness is substantially improved for large client counts.

### Wi-Fi 6 and MU-MIMO aware client optimization

HPE Aruba Networking's patented AI-powered ClientMatch technology ensures that all clients are attached to their best serving access point. Session metrics, network metrics, applications and client type are used to identify and maintain the best connection.

### HPE Aruba Networking Advanced Cellular Coexistence (ACC)

The ACC feature uses built in filtering to automatically minimize the impact of interference of high power cellular base stations, in building distributed antenna systems as well as small cell and femtocell equipment.

### Intelligent Power Monitoring (IPM)

HPE Aruba Networking APs continuously monitor and report hardware energy consumption. They can also be configured to enable or disable capabilities based on available PoE power—ideal when wired switches have exhausted their power budget.

---

### IoT Platform Capabilities

HPE Aruba Networking Wi-Fi 6 APs include an integrated Bluetooth 5 and 802.15.4 radio (for Zigbee support) to simplify deploying and managing IoT-based location services, asset tracking services, security solutions and IoT sensors. This allows organizations to leverage the 570EX Series as an IoT platform, which eliminates the need for an overlay infrastructure and additional IT resources.

### Target Wake Time (TWT)

Ideal for IoT solutions that communicate infrequently, this Wi-Fi 6 capability allows IoT devices to use 802.11ax protocol. TWT coordinates with client devices to allow them to sleep for extended periods and use shorter wake times to communicate before returning to sleep. This substantially extends the useful operating life of Wi-Fi 6 based battery powered sensors.

---

### HPE Aruba Networking Secure Infrastructure

The HPE Aruba Networking 570EX Series is an integral part of HPE Aruba Networking's Zero Trust security approach to help protect user authentication and wireless traffic. Select capabilities include:

#### WPA3 and Enhanced Open

With the introduction of WPA3 and Enhanced Open, a Wi-Fi 6 certified client will never send unencrypted traffic over the air. Even with an open authenticated network, Enhanced Open still provides strong encryption over the air.

In all Wi-Fi 6 user sessions, each user is uniquely encrypted and if they disconnect and reconnect, the encryption changes from session to session.

#### WPA2-MPSK

MPSK enables simpler passkey management for WPA2 devices—should the Wi-Fi password on one device change, no additional changes are needed for other devices. This feature is enabled when networks are deployed with HPE Aruba Networking NAC.



## Standard Features

### VPN Tunnels

In Remote AP (RAP) and IAP-VPN deployments, the 570EX Series can be used to establish a secure SSL/IPSec VPN tunnel to a Gateway or Mobility Controller that is configured as a VPN concentrator.

### Trusted Platform Module (TPM)

For enhanced device assurance, all HPE Aruba Networking APs have an installed TPM for secure storage of credentials and keys, and boot code.

---

### Simple and Secure Access

To simplify policy enforcement, the HPE Aruba Networking 570EX Series uses HPE Aruba Networking's Policy Enforcement Firewall (PEF) to encapsulate all traffic from the AP to the Mobility Controller (gateway) for end-to-end encryption and inspection. Policies are applied based on context including user role, device type, application, and location. This reduces the manual configuration of SSIDs, VLANs, and ACLs. PEF also serves as the underlying technology for HPE Aruba Networking Dynamic Segmentation.

---

### High-Density Connectivity

Each HPE Aruba Networking 570EX Series AP provides connectivity for a maximum of 512 associated clients per radio (1024 total).

---

### Flexible Operation and Management

Our unified APs can operate as standalone access points or with a gateway for greater scalability, security, and manageability. APs can be deployed using zero touch provisioning—without on-site technical expertise—for ease of implementation in branch offices and for remote work.

HPE Aruba Networking APs can be managed using cloud-based or on-premises solutions for any campus, branch, or remote work environment.

HPE Aruba Networking Central provides a single pane of glass for overseeing every aspect of wired and wireless LANs, WANs, and VPNs. AI-powered analytics, end-to-end orchestration and automation, and advanced security features are built natively into the solution.

---

### Additional Wi-Fi Features

#### Transmit Beamforming (TxBF)

Increased signal reliability and range

#### Dynamic Frequency Selection (DFS)

Optimized use of available RF spectrum

#### Maximum Ratio Combining (MRC)

Improved receiver performance for multi antenna access points

#### Cyclic Delay/Shift Diversity (CDD/CSD)

Enable use of multiple transmit antennas

#### Space-Time Block Coding

Increased connection robustness

#### Low-Density Parity Check (LDPC)

High performance error detection and correction coding for enhanced receiver performance

---



## Configuration Information

**Build To Order:** BTO is a standalone unit with no integration. BTO products ship standalone are not part of a CTO or Rack-Shippable solution.

### BTO Models

Remarks	Description	SKU
<b>570EX Unified Outdoor Access Points</b>		
1	HPE Aruba Networking AP-575EX (RW) Dual Radio 2x2/4x4 Wi-Fi 6 Internal Omni HazLoc Access Point	R4W33A
2	HPE Aruba Networking AP-575EX (US) Dual Radio 2x2/4x4 Wi-Fi 6 Internal Omni HazLoc Access Point	R4W34A
3	HPE Aruba Networking AP-575EX (EG) Dual Radio 2x2/4x4 Wi-Fi 6 Internal Omni Hazloc Access Point	R4W30A
4	HPE Aruba Networking AP-575EX (IL) Dual Radio 2x2/4x4 Wi-Fi 6 Internal Omni HazLoc Access Point	R4W31A
5	HPE Aruba Networking AP-575EX (JP) Dual Radio 2x2/4x4 Wi-Fi 6 Internal Omni HazLoc Access Point	R4W32A
6	HPE Aruba Networking AP-575EX (ID) Dual Radio 4x4/2x2 802.11ax Int Omni Ants HazLoc Outdoor AP	S5D95A
1	HPE Aruba Networking AP-577EX (RW) Dual Radio 2x2/4x4 Wi-Fi 6 Internal Directional HazLoc AP	R4W38A
2	HPE Aruba Networking AP-577EX (US) Dual Radio 2x2/4x4 Wi-Fi 6 Internal Directional HazLoc AP	R4W39A
3	HPE Aruba Networking AP-577EX (EG) Dual Radio 2x2/4x4 Wi-Fi 6 Internal Directional HazLoc AP	R4W35A
4	HPE Aruba Networking AP-577EX (IL) Dual Radio 2x2/4x4 Wi-Fi 6 Internal Directional HazLoc AP	R4W36A
5	HPE Aruba Networking AP-577EX (JP) Dual Radio 2x2/4x4 Wi-Fi 6 Internal Directional HazLoc AP	R4W37A
6	HPE Aruba Networking AP-577EX (ID) Dual Radio 4x4/2x2 802.11ax Int Dir Ants HazLoc Outdoor AP	S5D96A

### Configuration Rules

Rule #	Description	SKU
1	Available everywhere except US, Israel, Egypt, Indonesia and Japan. Partners must have an SOT (Cross border agreement).	
2	Available in US only. Partners must have an SOT (Cross border agreement).	
3	Available in Egypt only. Partners must have an SOT (Cross border agreement).	
4	Available in Israel only. Partners must have an SOT (Cross border agreement).	
5	Available in Japan only. Partners must have an SOT (Cross border agreement).	
6	Available in Indonesia only. Partners must have an SOT (Cross border agreement).	

**Notes:** [OCA Only Model Selection Form - HPE Aruba Networking > Wireless > Access Points > Outdoor / Rugged: HPE Aruba Networking 570EX Series Access Points](#)

## Mounting Accessories

### AP Mount Kits

Std (Min 0 // max 1) User Selection (min 0 // max 1)

HPE Aruba Networking AP-OUT-MNT-V1A Outdoor AP Long Arm Pole/Wall Mounting Bracket	R9H97A
HPE Aruba Networking AP-270-MNT-V2 Outdoor AP Short Arm Pole/Wall Mounting Bracket	JW053A
HPE Aruba Networking AP-270-MNT-H1 Outdoor AP Hanging One-Way Tilt Pole/Wall Mounting Bracket	JW054A
HPE Aruba Networking AP-270-MNT-H2 Outdoor AP Flush Wall Mounting Bracket	JW055A
HPE Aruba Networking AP-270-MNT-H3 Outdoor AP Hanging Dual-Tilt Pole/Wall Mounting Bracket	R6W11A

**Notes:** **For 575EX:**

- V1A bracket most often used for pole mount.
- V2 bracket most often used for wall mount.



## Configuration Information

- H1 bracket most often used for hanging from inclined or horizontal structure.
- The AP-575EX chassis does not ship with bracket

### For 577EX:

- H1 bracket most often with AP-577EX for mounting to a wall. Allows chassis tilt.
- V1A and V2 brackets can be used but will result in the AP-577EX pointing down.
- The AP-577EX chassis does not ship with bracket.

## Power Options

Remarks	Description	SKU
<b>PoE Power Options</b>		
	Std (Min 0 // max 1) User Selection (min 0 // max 1)	
1	HPE Aruba Networking AP-POE-ATSR 1-Port Smart Rate 802.3at 30W Midspan Injector	R6P67A
	HPE Aruba Networking AP-POE-BTSR 1-Port Smart Rate 802.3bt 60W Midspan Injector	R1C73A
	HPE Aruba Networking PD-9501-5GCO-AC 60W 802.3bt Smart Rate Otdr Surge Protection Midspan Injector	R7T40A
	HPE Aruba Networking PD-9501-5GCO-DC 60W 802.3bt Smart Rate Otdr Surge Protection Midspan Injector	R7T41A
<b>Configuration Rules</b>		
Rule #	Description	SKU
1	If this Power Injector is selected, bring in (Min 1 // Max 1) Localized power cord based on the HPE Aruba Networking Localization Menu	
<b>Notes:</b>	<ul style="list-style-type: none"><li>– Indoor Injector provides no surge protection</li><li>– Indoor injector requires indoor AC power cord x </li><li>– AP-57XEX may be powered by PoE Only</li><li>– Power Cord for JW630A R7T40A, R7T41A should be provided by installer</li><li>– The listed power injectors are not HazLoc certified and must be located outside of classified areas</li><li>– R7T40A and R7T41A do not include a power cord, power cord must be constructed by installer using the included power connector parts and assembled per the user guide by a certified installer</li></ul>	
<b>Power Injector Mounts</b>		
	For 574, 575, 577 Std (Min 0 // max 1) User Selection (min 0 // max 1)	
	HPE Aruba Networking PD-MOUNT-OD Outdoor PoE Midspan Injectors Pole/Mast Mount Kit	JW620A
<b>Notes:</b>	This is optional but recommended for outdoor injectors	

## Accessories

<b>Spare Items</b>		
	Std (Min 0 // max 99) User Selection (min 0 // max 99)	
<b>Notes:</b>	Spares of items that are shipped with the AP-570EX chassis.	
	HPE Aruba Networking Otdr AP Covers/Glands 1pk M25/5pk M20 Cover and Gland/2pk M16 Cover Ground Kit	Q8N47A
<b>Notes:</b>	This is a collection of extra covers and cabling glands, replicating what is in the shipping box	
	HPE Aruba Networking Outdoor AP Metric to Standard M20 to 1/2 inch NPT 5-pk Thread Adapter	Q8N48A
<b>Notes:</b>	This is a thread adapter normally used to allow direct interface for 1/2" NPT conduit	



## Configuration Information

### Software

#### Central

##### Cloud Services / Access Point Foundation Subscriptions

2, 8	HPE Aruba Networking Central AP Foundation 1-year Subscription E-STU	Q9Y58AAE
2, 8	HPE Aruba Networking Central AP Foundation 3 year Subscription E-STU	Q9Y59AAE
2, 8	HPE Aruba Networking Central AP Foundation 5 year Subscription E-STU	Q9Y60AAE
2, 8	HPE Aruba Networking Central AP Foundation 7 year Subscription E-STU	Q9Y61AAE
2, 8	HPE Aruba Networking Central AP Foundation 10 year Subscription E-STU	Q9Y62AAE

##### Cloud Services / Access Point Advanced Subscriptions

2, 8	HPE Aruba Networking Central AP Advanced 1 year Subscription E-STU	Q9Y63AAE
2, 8	HPE Aruba Networking Central AP Advanced 3 year Subscription E-STU	Q9Y64AAE
2, 8	HPE Aruba Networking Central AP Advanced 5 year Subscription E-STU	Q9Y65AAE
2, 8	HPE Aruba Networking Central AP Advanced 7 year Subscription E-STU	Q9Y66AAE
2, 8	HPE Aruba Networking Central AP Advanced 10 year Subscription E-STU	Q9Y67AAE

##### On-Prem Services / Access Point Foundation Subscriptions

3, 8	HPE Aruba Networking Central on Prem AP Foundation 1 year Subscription E-STU	R6U63AAE
3, 8	HPE Aruba Networking Central on Prem AP Foundation 3 year Subscription E-STU	R6U64AAE
3, 8	HPE Aruba Networking Central on Prem AP Foundation 5 year Subscription E-STU	R6U65AAE
3, 8	HPE Aruba Networking Central on Prem AP Foundation 7 year Subscription E-STU	R6U66AAE
3, 8	HPE Aruba Networking Central on Prem AP Foundation 10 year Subscription E-STU	R6U67AAE

##### On-Prem Services / Access Point Foundation Government Subscriptions

3	HPE Aruba Networking COP AP Foundation Government 1-year Subscription E-STU	S1P56AAE
3	HPE Aruba Networking COP AP Foundation Government 3-year Subscription E-STU	S1P57AAE
3	HPE Aruba Networking COP AP Foundation Government 5-year Subscription E-STU	S1P58AAE
3	HPE Aruba Networking COP AP Foundation 7-year Government Subscription E-STU	S1P59AAE
3	HPE Aruba Networking COP AP Foundation 10-year Government Subscription E-STU	S1P60AAE

#### Configuration Rules

Rule #	Description	SKU
2	Add the Central Cloud Skus to the HPE Aruba Networking Catalog as Standalone: HPE Aruba Networking > Network Management > Central > Cloud Services	
3	Add the Central On-Prem Skus to the HPE Aruba Networking Catalog as Standalone: HPE Aruba Networking > Network Management > Central > On-Prem Services	
6	Add the Central FedRAMP Service Skus to the HPE Aruba Networking Catalog as Standalone: HPE Aruba Networking > Network Management > Central > FedRAMP	
8	For OCA: When configuring the following AP 10-Pack, selection condition for this Subscription should be 0(default) or 10	
	HPE Aruba Networking AP-503 (RW) 10-Pack Dual Radio 2x2:2 Wi-Fi 6 Campus Access Point	S1E83A
	HPE Aruba Networking AP-503 (US) 10-Pack Dual Radio 2x2:2 Wi-Fi 6 Campus Access Point	S1E84A

Configuration Information

As-a-Service

Cloud Services / Access Point Foundation Subscriptions		
7	HPE Aruba Networking Central AP Foundation 1 year Subscription SaaS	Q9Y58AAS
7	HPE Aruba Networking Central AP Foundation 3 year Subscription SaaS	Q9Y59AAS
7	HPE Aruba Networking Central AP Foundation 5 year Subscription SaaS	Q9Y60AAS
7	HPE Aruba Networking Central AP Foundation 7 year Subscription SaaS	Q9Y61AAS
7	HPE Aruba Networking Central AP Foundation 10 year Subscription SaaS	Q9Y62AAS
Cloud Services / Access Point Advanced Subscriptions		
7	HPE Aruba Networking Central AP Advanced 1 year Subscription SaaS	Q9Y63AAS
7	HPE Aruba Networking Central AP Advanced 3 year Subscription SaaS	Q9Y64AAS
7	HPE Aruba Networking Central AP Advanced 5 year Subscription SaaS	Q9Y65AAS
7	HPE Aruba Networking Central AP Advanced 7 year Subscription SaaS	Q9Y66AAS
7	HPE Aruba Networking Central AP Advanced 10 year Subscription SaaS	Q9Y67AAS
Configuration Rules		
Rule#	Description	SKU
7	For IRIS reference only. No action required for OCX and Clic	



## Technical Specifications

### HPE Aruba Networking 570EX Series Specifications

#### Hardware Variants

- AP-575EX
  - Built in Omni Directional Antennas
  - 5 GHz Antennas 5dBi
  - 2.4GHz Antennas 3.4dBi
  - BLE/Zigbee: Integrated omnidirectional antenna and the peak gain of 6dBi
- AP-577EX
  - Built in 90°H x 90°V Directional Antennas
  - 5 GHz Antennas 5.6dBi
  - 2.4 GHz Antennas 6.8dBi
  - BLE/Zigbee: Integrated omnidirectional antennas with peak gain of 8.4dBi

---

#### Wi-Fi Radio Specifications

- AP type: Outdoor Hardened, Wi-Fi 6 dual radio, 5 GHz 4x4 MIMO and 2.4 GHz 2x2 MIMO
- Software-configurable dual radio supports 5 GHz (Radio 0) and 2.4 GHz (Radio 1)

#### 5 GHz:

- Four spatial stream Single User (SU) MIMO for up to 4.8 Gbps wireless data rate to individual 4SS HE160 Wi-Fi 6 client device (max)
- Two spatial stream Single User (SU) MIMO for up to 1.2 Gbps wireless data rate to individual 2SS HE80 Wi-Fi 6 client device (typical)
- Four spatial stream Multi-User (MU) MIMO for up to 4.8 Gbps wireless data rate to up to four 1SS or two 2SS HE160 Wi-Fi 6 DL-MU-MIMO capable client devices simultaneously (max)
- Four spatial stream Multi-User (MU) MIMO for up to 2.4 Gbps wireless data rate to up to four 1SS or two 2SS HE80 Wi-Fi 6 DL-MU-MIMO capable client devices simultaneously (typical)

#### 2.4 GHz:

- Two spatial stream Single User (SU) MIMO for up to 575 Mbps wireless data rate to individual 2SS HE40 Wi-Fi 6 client device (max)
- Two spatial stream Single User (SU) MIMO for up to 287 Mbps wireless data rate to individual 2SS HE20 Wi-Fi 6 client device (typical)
- Two spatial stream Single User (SU) MIMO for up to 287 Mbps wireless data rate to individual 2SS HE20 Wi-Fi 6 client device (typical)
- Support for up to 512 associated client devices per radio, and up to 16 BSSIDs per radio
- Supported frequency bands (country-specific restrictions apply): 2.400 to 2.4835 GHz (ISM)
  - 5.150 to 5.250 GHz (U-NII-1)
  - 5.250 to 5.350 GHz (U-NII-2A)
  - 5.470 to 5.725 GHz (U-NII-2C)
  - 5.725 to 5.850 GHz (U-NII-3/ISM)
  - 5.850 to 5.875 GHz (U-NII-4)
- Available channels: Dependent on configured regulatory domain
- Dynamic Frequency Selection (DFS) optimizes the use of available RF spectrum
- Supported radio technologies:
- 802.11b: Direct-sequence spread-spectrum (DSSS)
  - 802.11a/g/n/ac: Orthogonal frequency-division multiplexing (OFDM)
  - 802.11ax: Orthogonal frequency-division multiple access (OFDMA) with up to 16 resource units (RU)
- Supported modulation types:
- 802.11b: BPSK, QPSK, CCK
  - 802.11a/g/n: BPSK, QPSK, 16-QAM, 64-QAM, 256-QAM (proprietary extension)
  - 802.11ac: BPSK, QPSK, 16-QAM, 64-QAM, 256-QAM, 1024-QAM (proprietary extension)
  - 802.11ax: BPSK, QPSK, 16-QAM, 64-QAM, 256-QAM, 1024-QAM



## Technical Specifications

- 802.11n high-throughput (HT) support: HT 20/40
- 802.11ac very high throughput (VHT) support: VHT20/40/80/160
- 802.11ax high efficiency (HE) support: HE20/40/80/160
- Supported data rates (Mbps): 802.11b: 1, 2, 5.5, 11
  - 802.11a/g: 6, 9, 12, 18, 24, 36, 48, 54
  - 802.11n (2.4 GHz): 6.5 to 300 (MCS0 to MCS15, HT20 to HT40)
  - 802.11n (5 GHz): 6.5 to 600 (MCS0 to MVC31, HT20 to HT40)
  - 802.11ac: 6.5 to 3,467 (MCS0 to MCS9, NSS = 1 to 4, VHT20 to VHT160)
  - 802.11ax (2.4 GHz): 3.6 to 574 (MCS0 to MCS11, NSS = 1 to 2, HE20 to HE40)
  - 802.11ax (5 GHz): 3.6 to 4,803 (MCS0 to MCS11, NSS = 1 to 4, HE20 to HE160)
- 802.11n/ac/ax packet aggregation: A-MPDU, A-MSDU
- Transmit power: Configurable in increments of 0.5 dBm
- Maximum (conducted) transmit power (limited by local regulatory requirements):
  - 2.4 GHz band: +22 dBm per chain, +25dBm aggregate (2x2)
  - 5 GHz band: +22 dBm per chain, +28dBm aggregate (4x4)Note: conducted transmit power levels exclude antenna gain.
- Maximum EIRP (limited by local regulatory requirements):
  - 2.4 GHz band:
    - o 575EX: 29.0 dBm EIRP
    - o 577EX: 34.4 dBm EIRP
  - 5 GHz band:
    - o 575EX: 32.6 dBm EIRP
    - o 577EX: 36 dBm EIRP
- Advanced Cellular Coexistence (ACC) minimizes the impact of interference from cellular networks
- Maximum Ratio Combining (MRC) for improved receiver performance
- Cyclic Delay/Shift Diversity (CDD/CSD) to enable the use of multiple transmit antennas
- Short guard interval for 20-MHz, 40-MHz, 80-MHz and 160-MHz channels
- Space-Time Block Coding (STBC) for increased range and improved reception
- Low-Density Parity Check (LDPC) for high-efficiency error correction and increased throughput
- Transmit Beam-Forming (TxBF) for increased signal reliability and range
- 802.11mc Fine Timing Measurement (FTM) for precision distance ranging

---

## Power

- Maximum (worst-case) power consumption:
    - PoE powered (dual ports): 32.0W
    - PoE powered (single port, full function): 26.1W
  - Maximum (worst-case) power consumption in idle mode: 14.0W (single PoE) or 16.0W (dual PoE)
  - Maximum (worst-case) power consumption in deep-sleep mode: 2.9W (single PoE) or 3.9W (dual PoE)
  - The AP supports Power over Ethernet (PoE) on port E0 and/or E1
  - When PoE power is supplied to both Ethernet ports, the AP can be configured to combine or prioritize power sources
  - Power sources are sold separately; see the ordering Information section below for details
  - When powered by 1x 802.3at (class 4) PoE and with the IPM feature disabled, the AP will disable the other Ethernet port. In the same configuration but with IPM enabled, the AP will start up in unrestricted mode, but may dynamically apply restrictions depending on the PoE budget and actual power. The feature restrictions and order can be programmed.
  - Operating the AP with single or dual 802.3af (Class 3 or lower) PoE source is not supported.
-

## Technical Specifications

### Additional Interfaces

- E0: HPE SmartRate port (RJ-45)
    - Auto-sensing link speed (100/1000/2500BASE-T) and MDI/MDIX
    - 2.5 Gbps speed complies with NBase-T and 802.3bz specifications
    - PoE-PD: 48vDC (nominal) 802.3at/bt (Class 4 or higher)
    - 802.3az Energy Efficient Ethernet (EEE)
  - E1: 100/1000BASE-T (RJ-45)
    - Auto-sensing link speed and MDI/MDIX
    - 802.3az Energy Efficient Ethernet (EEE)
    - PoE-PD: 48vDC (nominal) 802.3at/bt (Class 4 or higher)
  - Link Aggregation (LACP) support between both network ports for redundancy and increased capacity
  - Bluetooth 5 and 802.15.4 radio
    - 2.4 GHz
    - Bluetooth 5: Up to 8dBm transmit power and -95dBm receive sensitivity
    - Zigbee: Up to 8 dBm transmit power and -97dBm receive sensitivity
    - Up to 4dBm transmit power (class 2) and -91 dBm receive sensitivity
  - Visual indicator (multi-color LED): For system and radio status
  - Reset button: Factory reset (during device power up)
  - USB-C console interface
- 

### Mounting

- Optional mounting kits: AP-OUT-MNT-V1A: Outdoor Pole/Wall Long Mount Kit
  - AP-270-MNT-V2: Outdoor Pole/Wall Short Mount Kit
  - AP-270-MNT-H1: Outdoor AP Hanging or Tilt Install Mount Kit
  - AP-270-MNT-H2: Outdoor Flush Wall or Ceiling Mount
  - AP-270-MNT-H3: Outdoor AP Hanging or Dual-Tilt Install Mount Kit

### Mechanical Specifications

#### AP-575EX

- Dimensions/weight (excluding mount):
  - 24 cm (W) x 24 cm (D) x 27 cm (H)/9.4" (W) x 9.4" (D) x 10.6" (H)
  - 2.5 kg/5.6 lbs

#### AP-577EX

- Dimensions/weight (excluding mount):
    - 23 cm (W) x 22 cm (D) x 14 cm (H)/ 9.0" (W) x 8.7" (D) x 5.6" (H)
    - 2.1 kg/4.6 lbs
- 

### Environmental

- Operating
  - Temperature: -40° C to +65° C (-40° F to +149° F) with full solar loading
  - Humidity: 5% to 93% non-condensing internal
  - Rated for operation in all weather conditions
- Storage and transportation:
  - Temperature: -40° C to +70° C (-40° F to +158° F)
- Operating Altitude: 3,000 m
- Water and Dust
  - IP66/67
- Salt Tolerance
  - Tested to ASTM B117-07A Salt Spray 200hrs
- Wind Survival: Up to 165 Mph



---

## Technical Specifications

- Shock and Vibration ETSI 300-19-2-4
- 

### Regulatory

- FCC/ISED
- CE Marked
- RED Directive 2014/53/EU
- EMC Directive 2014/30/EU
- Low Voltage Directive 2014/35/EU
- IEC/EN/UL 62368-1
- EN 60601-1-1, EN60601-1-2

For more country-specific regulatory information and approvals, please see your HPE Aruba Networking representative.

---

### Regulatory Model Numbers

- AP-575EX: APEX0575
  - AP-577EX: APEX0577
- 

### Certifications

- CB Scheme Safety, cTUVus
  - UL2043 plenum rating
  - Wi-Fi Alliance certified 802.11a/b/g/n/
  - Wi-Fi CERTIFIED™ 6 (802.11ax)
  - Wi-Fi CERTIFIED™ ac (with Wave 2 features)
  - Wi-Fi CERTIFIED Location™
  - Class 1 Div 2
  - ATEX Zone 2
- 

### Warranty

HPE Aruba Networking's hardware limited lifetime warranty.

---

### Minimum Operating System Software Versions

- HPE Aruba Networking Wireless Operating System and HPE Aruba Networking InstantOS 8.7.0.0
  - HPE Aruba Networking Wireless Operating System 10.2.0.0
- 



## Technical Specifications

RF Performance Table		
	Maximum transmit power (dBm) per transmit chain	Receiver sensitivity (dBm) per receive chain
<b>2.4 GHz, 802.11b</b>		
1 Mbps	22	-97
11 Mbps	22	-89
<b>2.4 GHz, 802.11g</b>		
6 Mbps	22	-94
54 Mbps	20	-76
<b>2.4 GHz, 802.11n/ac HT20</b>		
MCS0	22	-93
MCS8	19	-72
<b>2.4 GHz, 802.11ax HE20</b>		
MCS0	22	-93
MCS11	17	-62
<b>5 GHz, 802.11a</b>		
6 Mbps	22	-95
54 Mbps	20	-76
<b>5GHz, 802.11n/ac HT20/VHT20</b>		
MCS0	22	-94
MCS8	19	-72
<b>5GHz, 802.11n/ac HT40/VHT40</b>		
MCS0	22	-92
MCS9	19	-68
<b>5GHz, 802.11ac VHT80</b>		
MCS0	22	-90
MCS9	19	-65
<b>5GHz, 802.11ac VHT160</b>		
MCS0	22	-84
MCS9	19	-59
<b>5GHz, 802.11ax HE20</b>		
MCS0	22	-94
MCS11	17	-62
<b>5GHz, 802.11ax HE40</b>		
MCS0	22	-91
MCS11	17	-60
<b>5GHz, 802.11ax HE80</b>		
MCS0	22	-87
MCS11	17	-57
<b>5GHz, 802.11ax HE160</b>		
MCS0	22	-85
MCS11	17	-53

**Notes:** Maximum capability of the hardware provided (excluding antenna gain). Maximum transmit power is limited by local regulatory settings.

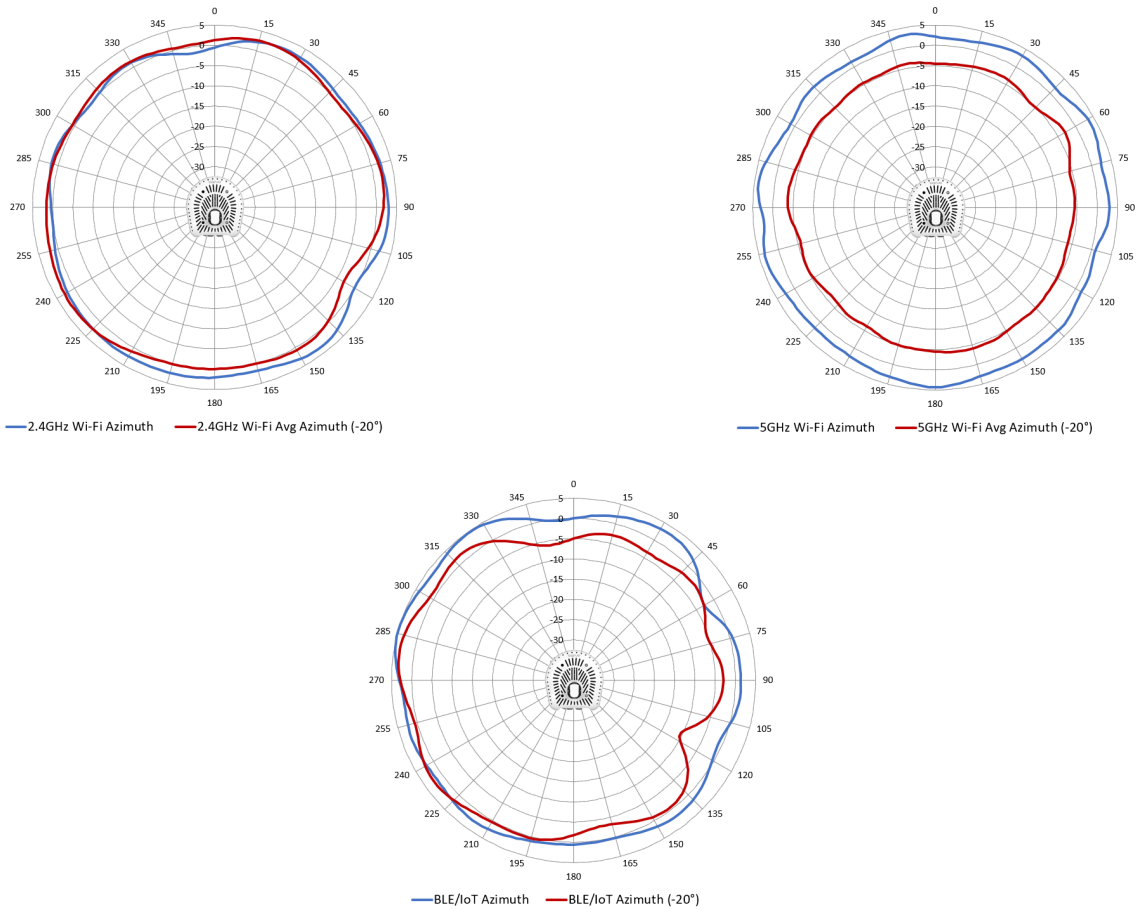


Technical Specifications

Antenna Patterns AP-575EX

Horizontal planes (Azimuth, top view)

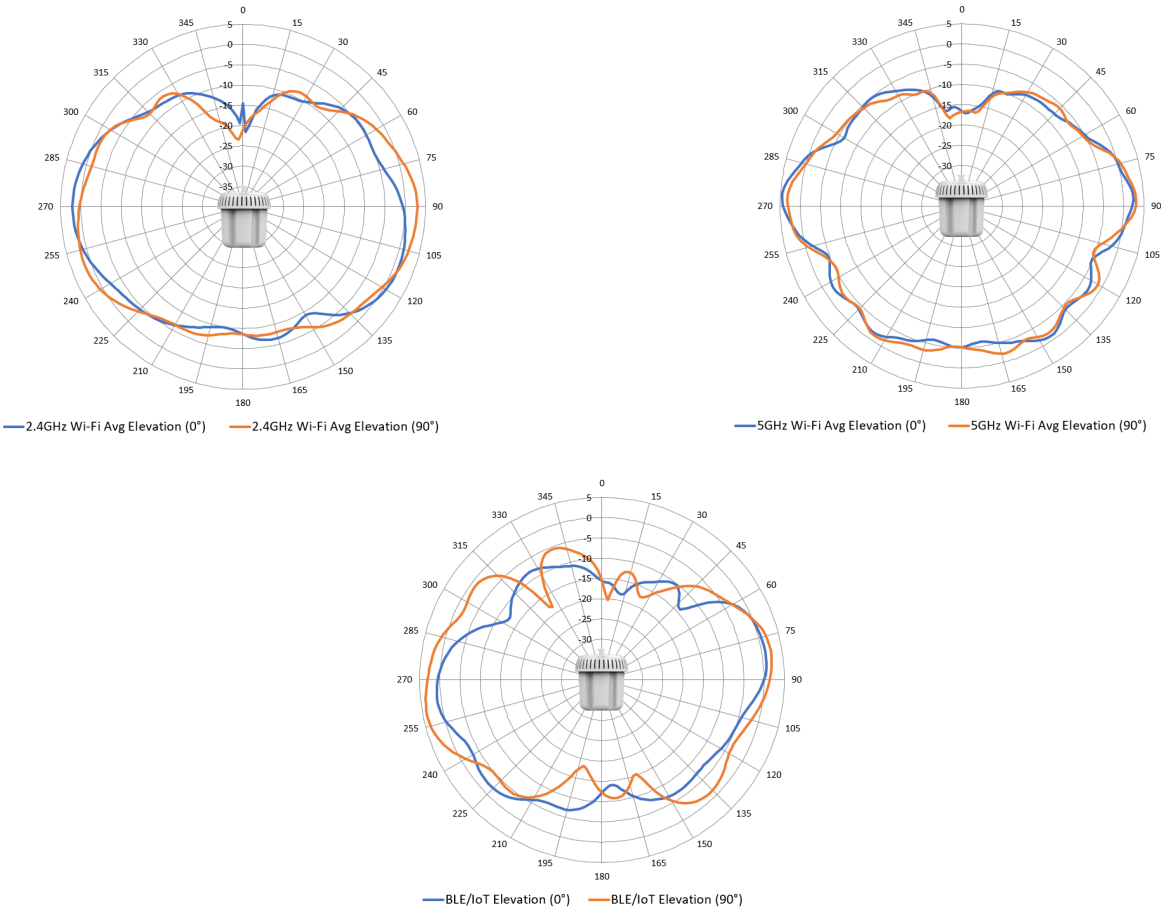
Showing top-view azimuth (0 degrees) and 20 degree downtilt patterns (averaged patterns for all applicable antennas and frequencies within the bands)



Technical Specifications

Vertical planes (Elevation, side view radome facing down)

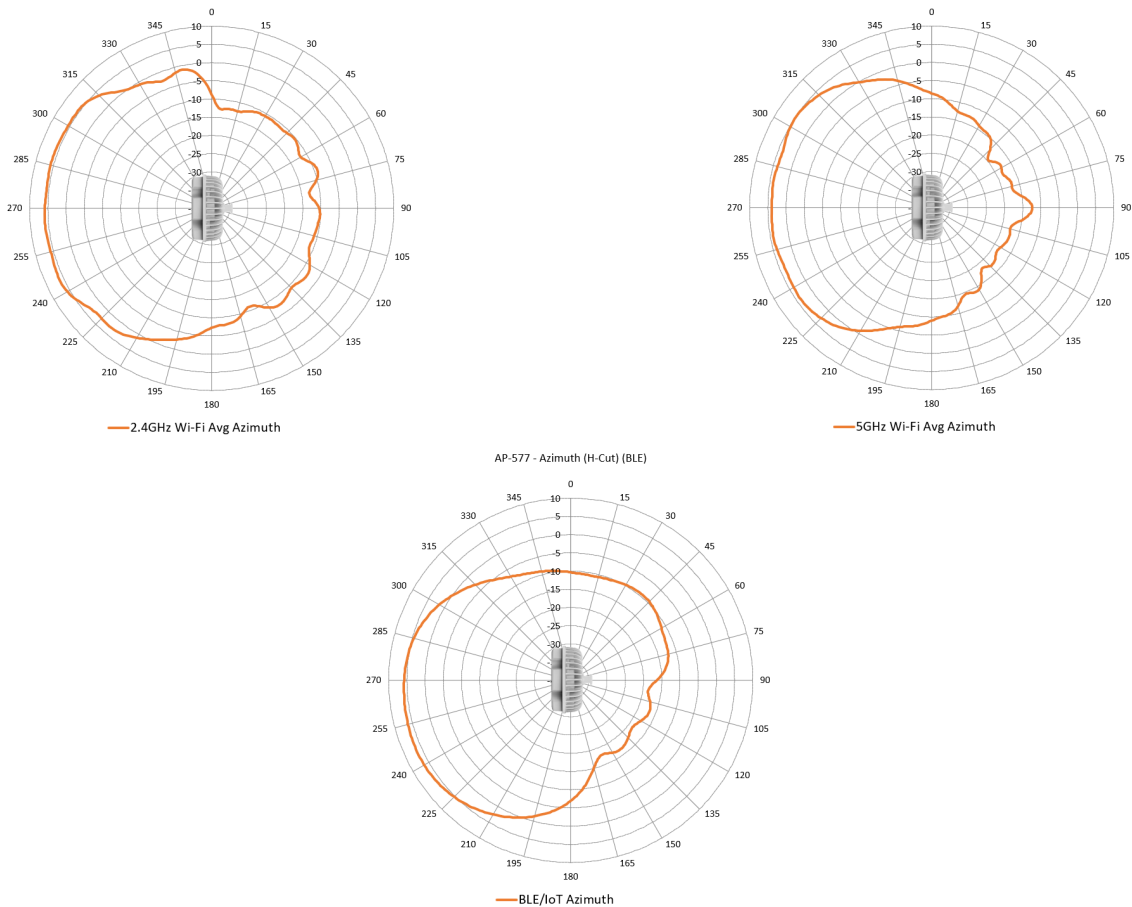
Showing side-view with AP rotated 0 and 90 degrees (averaged patterns for all applicable antennas and frequencies within the bands)



Technical Specifications

Antenna patterns AP-577EX  
Horizontal planes (Azimuth, top view, radome facing left)

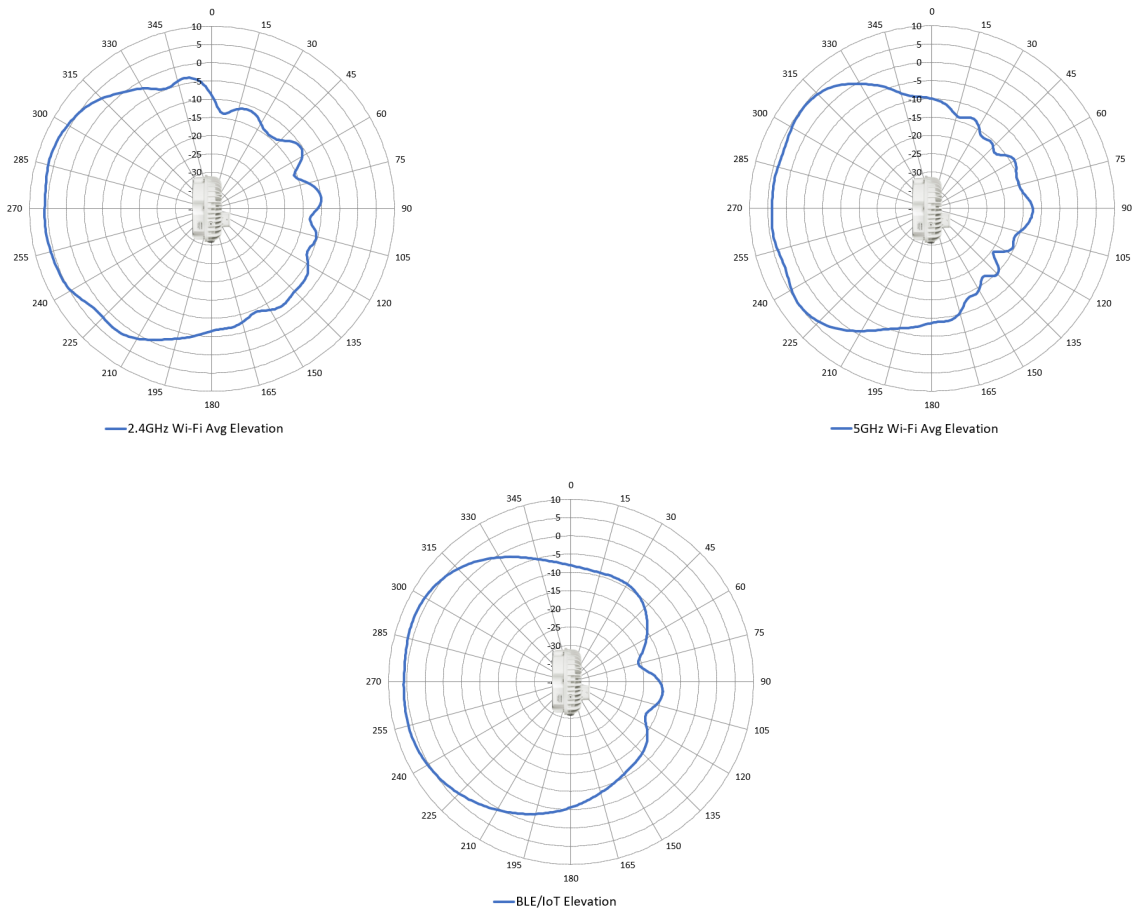
Showing top-view patterns (averaged patterns for all applicable antennas and frequencies within the bands)



Technical Specifications

Vertical Planes (Elevation, side view, radome facing left)

Showing side-view patterns (averaged patterns for all applicable antennas and frequencies within the bands)





## Summary of Changes

Date	Version History	Action	Description of Change
07-Apr-2025	Version 12	Changed	Overview, Standard Features, Configuration Information, and Technical Specifications sections were updated.
21-Jan-2025	Version 11	Changed	Technical Specifications section was updated.
16-Dec-2024	Version 10	Changed	QuickSpecs was updated.
04-Dec-2023	Version 9	Changed	Series name was updated.
16-Oct-2023	Version 8	Changed	Configuration Information section was updated
07-Aug-2023	Version 7	Changed	Configuration Information section was updated
21-Nov-2022	Version 6	Changed	Configuration Information section was updated.
06-Dec-2021	Version 5	Changed	SKUs were added in Configuration Information section.
15-Mar-2021	Version 4	Changed	SKUs were added in Configuration Information section.
02-Nov-2020	Version 3	Changed	Configuration Information section was updated. New SKUs were added.
08-Sep-2020	Version 2	Changed	Configuration Information section was updated. New SKUs were added.
01-Jun-2020	Version 1	New	New QuickSpecs



## Copyright

**Shape the Future of QuickSpecs – Your Input Matters**

Make the right purchase decision.  
Contact our presales specialists.



Chat



Email



Call



Get updates



**Hewlett Packard  
Enterprise**

© Copyright 2025 Hewlett Packard Enterprise Development LP. The information contained herein is subject to change without notice. The only warranties for Hewlett Packard Enterprise products and services are set forth in the express warranty statements accompanying such products and services. Nothing herein should be construed as constituting an additional warranty. Hewlett Packard Enterprise shall not be liable for technical or editorial errors or omissions contained herein.

To learn more, visit: <http://www.hpe.com/networking>

a00059766enw - 16533 - Worldwide - V12 - 07-April-2025